



# Tiger Machine Company

## TIGER EQUIPMENT BATCHING & COMPONENTS

For almost six decades TIGER'S innovation and the quality of its equipment led the way in Japan and Asia. Today TIGER leads the way around the world with revolutionary machinery concepts for the concrete products industry.

One of the secrets of manufacturing top quality concrete products is having sound, clean, & strong raw materials that are properly graded and blended to make the best semi-dry concrete mixture possible. The only way to obtain that is by having in place a good, simple and effective batching system capable of producing consistent raw materials blends to feed TIGER'S quality RM and/or DM series batch mixers.

Mixing is also very important, and TIGER's durable and reliable RM and DM series mixers, deliver quality concrete to the diverse series of concrete product machines made by TIGER. However, if the blend supplied to the mixers is poorly done, in the wrong proportion, quantity or inconsistent from batch to batch the end products quality will be affected. That is why a proper capacity quality batch plant is essential to having a good concrete products facility operating efficiently and that makes top quality concrete masonry products.

In TIGER we take pride in our work and the quality of our batching systems show it. Our economical, simple and efficient batching systems are designed in innumerable capacities, sizes and styles.

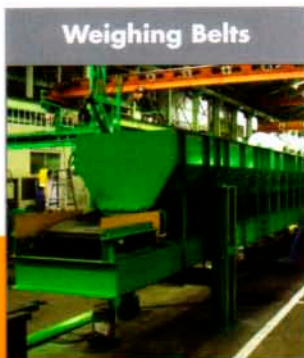
Our batching plants are modular in format, easy to assemble, maintain/service and are safer because of their simplicity. Our batching plants and components are "custom made" which better fit our customer needs than standardized batching systems. This is so because no two concrete masonry plant projects are alike. TIGER's custom batching easily meet the production needs our customer's and are uniquely tailored for the job at hand. On many occasions they cost less than standardized batching systems from other companies.

Throughout the years TIGER'S equipment design has progressed exponentially to higher levels of sophistication incorporating the latest ideas, concepts and technologies of today and tomorrow. Yet when it comes to batching, although technologies are important, it is proven time after time that simpler batch plant designs are always a better approach to complex raw material handling needs. Simplicity means lower initial investment costs, easier installation, set up and most importantly economy of operation overall.

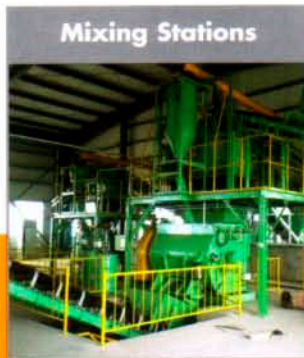
**No matter what your needs for batching equipment are, TIGER has a solution for your project!**



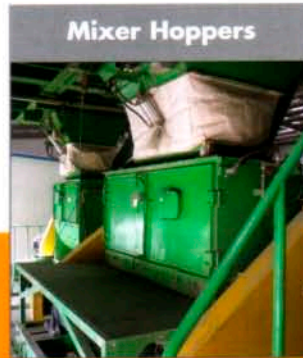
Custom Made



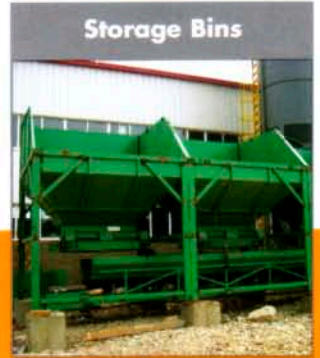
Weighing Belts



Mixing Stations



Mixer Hoppers



Storage Bins

*Leadership through innovation.*

# TIGER

## BATCHING & COMPONENTS

### Bins & Conveyors

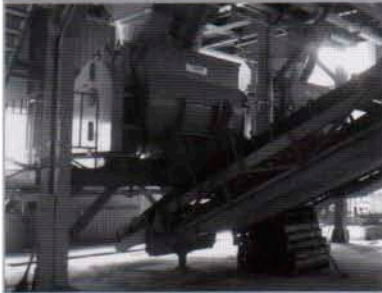


TIGER focuses on using the invaluable experience it has acquired over its life as a company supplying quality machinery for the concrete products industry to provide batch plants that meet each customer's specific requirements. Some of those are related to capacity, others are related to types and sizes of aggregates, and others pertain to available space for the batching plant.

### Transfer Belts

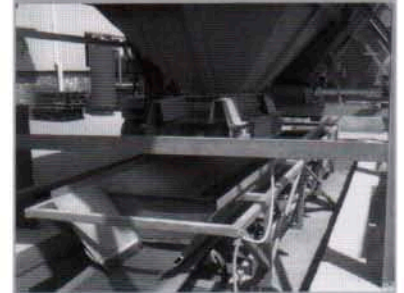


### Concrete Belts



From simple main material mix plants to dual or multiple mix plants (main mix and single or multiple face mixes), to using multiple feeder conveyors and bins, for multiple colors and using admixture and color dispensers, TIGER has a solution to your batching needs.

### Volumetric Systems



TIGER batching equipment and components are available for large, medium and small permanent facilities, special projects, installation at temporary sites. TIGER batching is available in a variety of layout configurations/formats, capacities and is made to suit many batch sizes.

### Feeding Belts

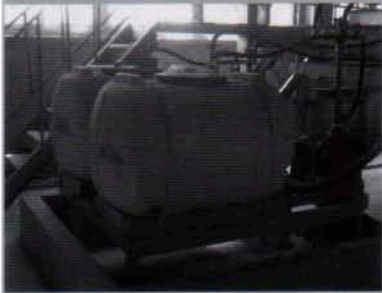


TIGER batching is always designed with the customer needs in mind. Please consult your nearest TIGER representative or office where our team of engineers, project developers and sales people will help you design the correct batching plant for your needs. TIGER is always at the forefront of our industry leading the way with innovation and revolutionary concepts based on simplicity, effectiveness, lower cost and efficiency in mind. TIGER is best!

### Cement Batchers



### Admixture Systems



### Custom Made



### Aggregate Batchers



### Tiger International, Inc.

Worldwide Sales

PO Box 2288 • Portage, MI 49081-2288 - U.S.A.

Phone: 269.353.8722 • Fax: 269.353.8723

[www.tigermachine.com](http://www.tigermachine.com)



### Tiger Machine Co., Ltd.

World Headquarters

2327 Abe Ochiai-Cho, Takahashi-Shi  
Okayama-Ken, 716-0061 - Japan

Phone: +81-866-22-2927 • Fax: +81-866-22-2844



### Pathfinder Systems

Canada and U.S. Sales

695 Ottawa Beach Road • Holland, Michigan 49424  
Phone: 616-395-8447 • Fax: 616-395-5995